

## Planterboxdirect.com- 18" x 4' Raised Planter with Legs

Required tools (not included), Drill (1/4" hex driver), Gloves, Safety Glasses



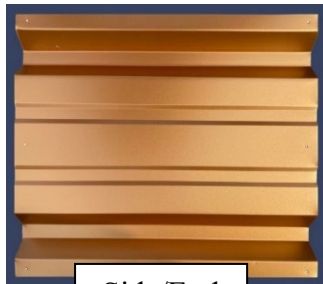
(To make process easier, use a table to lay panels on while screwing parts together)

Caution – Metal may be sharp, wear gloves to protect your hands.

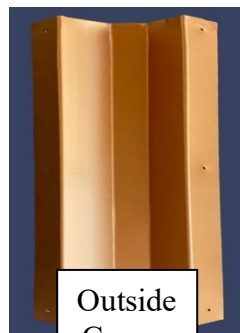
Caution – Wear proper eye protection to protect from debris while screwing.



1. Remove all plastic before installation
2. **Locate all parts.** 2- side panels, 2- end panels, 4- outside corners, 1 – bottom panel, 32- color match screws, 8 protective rubber screw caps.



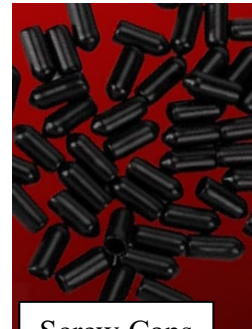
Side/End Panels



Outside Corner



Bottom Panel

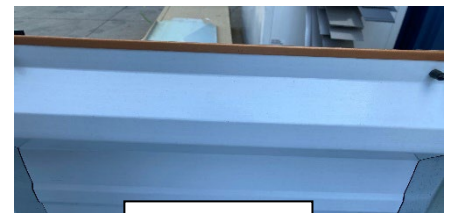


Screw Caps



Color-Match Screw

3. On each panel, with the metal lines horizontal locate the HEM edge without pre-piloted screw holes.  
**This will be the top.**
4. Using (1) end panel align the top piloted holes with (1) outside corner. Using a 1/4" hex bit, screw in until snug
5. Align bottom piloted holes, using 1/4" hex bit, screw in until snug
6. Align center piloted holes, using 1/4" hex bit, screw in until snug
7. Repeat steps 4, 5 & 6 until each end panel (2 total) has (2) outside corners screwed on to each
8. Locate (1) side panel, align the top piloted holes, with (1) corner (corner should be connected to end panel as seen to the right), using a 1/4" hex bit, screw in until snug



HEM edge



End Panel with 2 Corners

9. Align bottom piloted hole, using ¼” hex bit screw in until snug
10. Align center piloted hole, using ¼” hex bit screw in until snug
11. Repeat steps 8, 9 & 10 until each side panel (2 total) is screwed together with the outside corners
12. Now to install the bottom to your box. It is easiest to flip the box over so the legs are facing up.



Bottom Panel in Planter Box

13. Locate the bottom panel and (8) screws. With the 90° (degree) angle facing up, place the bottom into the box. (Flat side of bottom should be on the inside of the planter box)
14. Align the pre-piloted holes to one another. Using your ¼” hex bit screw both end panels to the base until snug.
15. Align the pre-piloted holes on the side panels to the bottom. Using your ¼” hex bit screw both side panels to the base until snug.
16. Your raised planter box is now ready to fill and plant!

**Finished Product** →



Raised Bed with Leg covers